



PEPTIDE SCIENTIFIC INC

PSI[®] PEPTIDE SYNTHESIZER

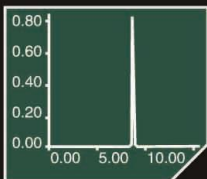
FROM MILLIGRAM TO KILOGRAM

SYNTHESIZER	APPLICATION	SCALE (mmol)	CRUDE PEPTIDE (g)
PSI 200 series	R&D	0.01-1/channel	0.01-2 /channel
PSI 300 series	R&D	0.05-2	0.05-8
PSI 400 series	R&D/Clinic Trial	0.25-10	0.25-80
PSI 500 series	Pilot Production	5-100	20-400
PSI 600 series	Industrial	>100	200-10,000

PSI INNOVATION, QUALITY AND PERFECTION

HIGH PURITY

- ◆ >99% coupling efficiency
- ◆ Unique PSI's "Thorough Reaction Mixing System" (TRMS)
- ◆ Adjustable 180/270 degree "Up-Down" Mixing



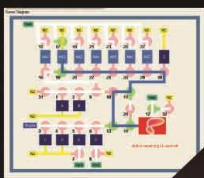
LESS SOLVENT

- ◆ Solvent Recycling System (SRS)
- ◆ Saving up to 50% of the wash solvents
- ◆ Environment friendly waste disposal



cGMP COMPLIANCE

- ◆ Software designed to meet FDA 21CFR part 11 and other GMP compliances
- ◆ Digital Signature Technology prevents possible data loss or modification
- ◆ Flexible program is easy to learn, modify and run



EASY & SAFE OPERATION

- ◆ Fully automated operation
- ◆ Accidental Prevention & Protection System
- ◆ Personal Injury Protection



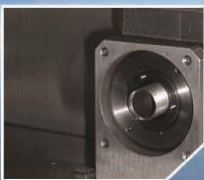
LINEAR SCALE UP

- ◆ Automatic linear scale up from research to production
- ◆ Time consuming processing is avoided



SOLID, RELIABLE AND DURABLE

- ◆ Teflon valves with 5 million operation life time
- ◆ Digital Servo Motor requires no maintenance
- ◆ Durable 316L Stainless Steel Structure



LOCAL TECHNICAL SUPPORT

- ◆ Local professional service team
- ◆ Free technical support and consulting



PSI200 SERIES (MULTIPLE)

PSI200 Multiple Peptide Synthesizer is the best selling product of PSI. It is specially designed for research centers, hospitals, institutes and core laboratories to the application of peptide research, drug screening, custom peptide manufacturing, etc. Up to 6 peptides are synthesized simultaneously by PSI 200. It is a highly efficiency, low cost semi-automated instrument None of the likes has been seen in the market yet.

Adding amino acid and the selected coupling reagents is performed by hand. Everything else is automated. It is particularly helpful for scientists who want to check the coupling efficiency during the synthesis.

The software of PSI200 is simple and concise. It is compatible with touch screen computer



PSI200A

Three Channels
 Scale: 0.01mmol-0.2 mmol/channel
 Peptide Yield: 10-500 mg/channel
 Reaction Vessel: 10 ml

PSI200B

Three Channels
 Scale: 0.05mmol-1 mmol/channel
 Peptide Yield: 50-2000 mg/channel
 Reaction Vessel: 40 ml

PSI200C

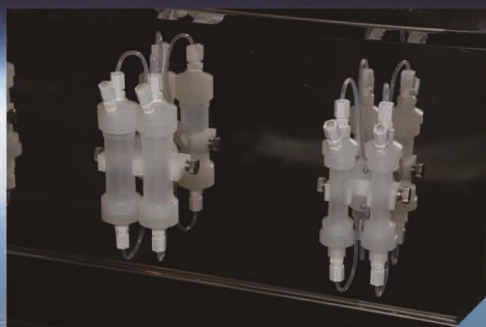
Six Channels
 Scale: 0.01mmol-0.2 mmol/channel
 Peptide Yield: 10-500 mg/channel
 Reaction Vessel: 10 ml

PSI200D

Six Channels
 Scale: 0.05mmol-1 mmol/channel
 Peptide Yield: 50-2000 mg/channel
 Reaction Vessel: 40 ml

PSI200E

Two Channels
 Scale: 0.25mmol-4 mmol/channel
 Peptide Yield: 0.25-20 g/channel
 Reaction Vessel: 200 ml



PSI300 SERIES (ADVANCED)

PSI300 high performance peptide synthesizer has been widely used by universities, research institutes, core facilities, pharmaceutical companies for peptide research, drug discovery and screening, peptide vaccine, etc.,

Thanks to the high coupling efficiency, peptide chemist now has the opportunity to synthesize the extra long and difficult peptides.

PSI300 software is designed for user-friendly operation. Each synthesis step is displayed on the screen both in text and diagram. Chemist can use desired parameters to control the synthesis, such as the speed of the mixing, coupling time, reagent washing, solvent recycling, etc.. Password protection ensures that the only authorized person can perform the instrument.



PSI300A

Scale: 0.05-1 mmol
Peptide Yield: 10 -800 mg
Reaction Vessel: 40 ml

PSI300B

Scale: 0.1-2 mmol
Peptide Yield: 100 -8000 mg
Reaction Vessel: 40 ml to 100ml

PSI300A/PSI300B

Chemistry: Fmoc
Activation: HOBT/DIC/DCC/HBTU/HATU, etc
AA input: Powder or Solution
Reagents: 8 chemicals
AA Reservoir: 15 ml
Mixing: Adjustable 0-180/270 degree "up-down" mixing



PSI400 SERIES (GLP)

PSI400 is designed for peptide drug discovery, peptide vaccine research, clinic trial and small scale production.

Thanks to the high coupling efficiency, peptide chemist now has the opportunity to synthesize extra long and difficult peptides.

PSI400 software is designed for user-friendly operation. Each synthesis step is displayed on the screen both in text and diagram. Chemist can use desired parameters to control the synthesis, such as the speed of the mixing, coupling time, reagent washing, solvent recycling, etc.. Password protection ensures that the only authorized person can perform the instrument.



PSI400A/PSI400B/PSI400C

Chemistry: Fmoc
 Activation: HOBT/DIC/DCC/HBTU/HATU, etc
 AA input: Powder or Solution
 Reagents: 8 chemicals
 AA Reservoir: 50-200 ml
 Mixing: Adjustable 0-180/270 degree "up-down" mixing

PSI400A

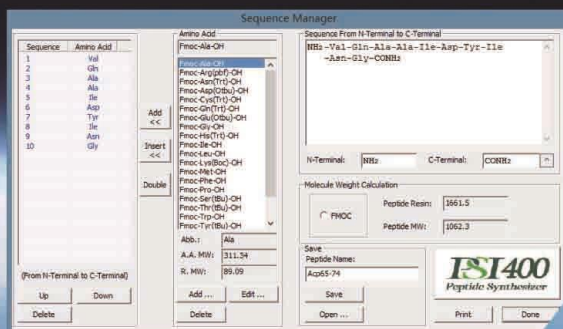
Scale: 0.25-4 mmol
 Peptide Yield: 0.25 -16g
 Reaction Vessel: 40 ml-200nl

PSI400B

Scale: 0.5-10 mmol
 Peptide Yield: 0.5 -32 g
 Reaction Vessel: 100 ml to 500ml

PSI400C

Scale: 1-20 mmol
 Peptide Yield: 1 -64 g
 Reaction Vessel: 200 ml to 1000ml



PSI500 SERIES (GMP)

PSI500 is a GMP peptide synthesizer designed to meet FDA's requirements for cGMP production. The software complies with FDA 21 CFR Part 11, too.

PSI500 is best for the clinic trial and pilot peptide production. Thanks to the "Thorough Reaction Mixing System (TRMS)" Technology, the coupling efficiency for each amino acid has been improved to >99%.

PSI500 software is designed for user-friendly operation. Each synthesis step is displayed on the screen both in text and diagram. Chemist can use desired parameters to control the synthesis, such as the speed of the mixing, coupling time, reagent washing, solvent recycling, etc.. Quadruple password protection prevents any unauthorized operation. Digital Signature Technology records every step of the synthesis automatically and permanently. Leak Detection System prevents possible synthesis failure due to Inadequate solvents or gas during the synthesis. Sophisticated Solvent Delivery System eliminates cross contamination.



PSI500A

Scale: 5-40 mmol
Peptide Yield: 5 -130g
Reaction Vessel: 0.25-2L

PSI500B

Scale: 20-100 mmol
Peptide Yield: 20 -300 g
Reaction Vessel: 1 to 5L

PSI500A/PSI500B

Chemistry: Fmoc
Activation: HOBT/DIC/DCC/HBTU/HATU, etc
AA Input: Powder or Solution
Reagents: Support 8 different reagents
AA Reservoirs: 500-2000 ml
Mixing: Adjustable 0-180 degree "Up-Down" Mixing



PSI600 SERIES (GMP)

PSI600 is a GMP peptide synthesizer designed to meet FDA's requirements for pharmaceutical API production. The software complies with FDA 21 CFR Part 11, too.

PSI600 is best for the clinic trial and pilot peptide production. Thanks to the "Thorough Reaction Mixing System (TRMS)" Technology, the coupling efficiency for each amino acid has been improved to >99%.

PSI600 software is designed for user-friendly operation. Each synthesis step is displayed on the screen both in text and diagram. Chemist can use desired parameters to control the synthesis, such as the speed of the mixing, coupling time, reagent washing, solvent recycling, etc.. Quadruple password protection prevents any unauthorized operation. Digital Signature Technology records every step of the synthesis automatically and permanently. Leak Detection System prevents possible synthesis failure due to inadequate solvents or gas during the synthesis. Sophisticated Solvent Delivery System eliminates cross contamination.



PSI600A

Scale: 40-200 mmol
Peptide Yield: 40 -600g
Reaction Vessel: 2-10L

PSI600B

Scale: 100-400 mmol
Peptide Yield: 100 -1200 g
Reaction Vessel: 5 to 20L

PSI600C

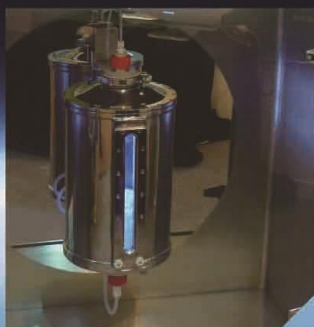
Scale: 100-600 mmol
Peptide Yield: 100 -1800g
Reaction Vessel: 5-30L

PSI600D

Scale: 200-1000 mmol
Peptide Yield: 500 -3000 g
Reaction Vessel: 20 to 50L

PSI600A/PSI600B/PSI600C/PSI600D

Chemistry: Fmoc
Activation: HOBT/DIC/DCC/HBTU/HATU, etc
AA Input: Powder or Solution
Reagents: Support 8 different reagents
AA Reservoirs: 500-20000 ml
Mixing: Adjustable 0-180 degree "Up
-Down" Mixing



Based in New York, USA, Peptide Scientific Inc (PSI) is a leading peptide instrument company in the world. The new generation of PSI peptide synthesizers are the most advanced products on the market to meet today's tough demanding from the peptide society.

PSI is the inventor of the "Thorough Reaction Mixing System (TRMS)" technology which greatly improves the coupling efficiency - the most important key factor in the peptide synthesis. PSI's unique "Solvent Recycling System (SRS)" is a green design which cuts consumption of washing solvents and the waste in half without sacrificing the quality.

PSI has earned reputations from renowned universities, research institutions and pharmaceutical companies. From milligrams to kilograms, from R&D to GMP Production, from single channel to multiple channels, from semi-auto to fully automated, you can always find the most suitable instrument from PSI to meet your requirements.

Not only we guarantee the super performance of the PSI instrument, but also we make very effects to support the customers to reach their goal in the peptide synthesis. We believe that if our customers don't succeed, we won't succeed.

USA HEADQUARTER

PEPTIDE SCIENTIFIC INC
10 Madison Road, Fairfield
NJ 07004, USA
TEL: 1 718 618 5025
www.peptidescientific.com
email: info@peptidescientific.com

EUROPE DISTRIBUTOR

TIDES SERVICE TECHNOLOGY
Johann-Karg Str. 44
85540 Haar, German
TEL: 49 163 783 21 67
email: Istoeckl@tidesservice.com



JAPAN DISTRIBUTOR

LMS Co., Ltd
Tanaka Bldg., 3-6-7, Hongo,
Bunkyo-ku, Tokyo, 113-0033, Japan
TEL: 81 3 5842 4171
email: y-kadooaka@lms.co.jp

ASIA DISTRIBUTOR

PSI SCIENTIFIC (HK) Co., Ltd
Room 1120 -11 /F
Leighton Centre 77 Leighton Road.
Causeway Bay, Hong Kong
TEL: 852 2894 6802
email: hk@peptidescientific.com

PSI. Advanced Peptide Instrumentation and Technology